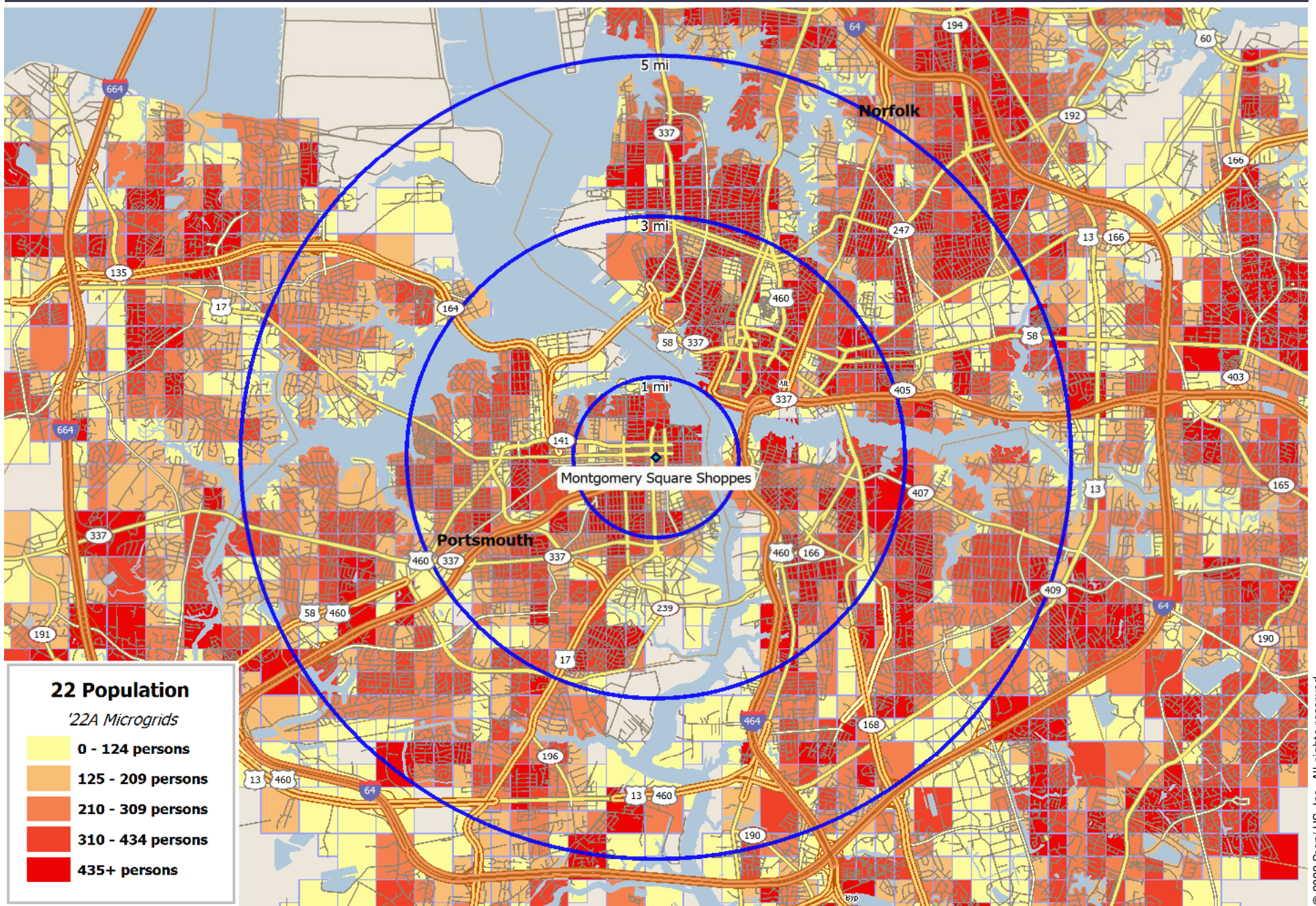
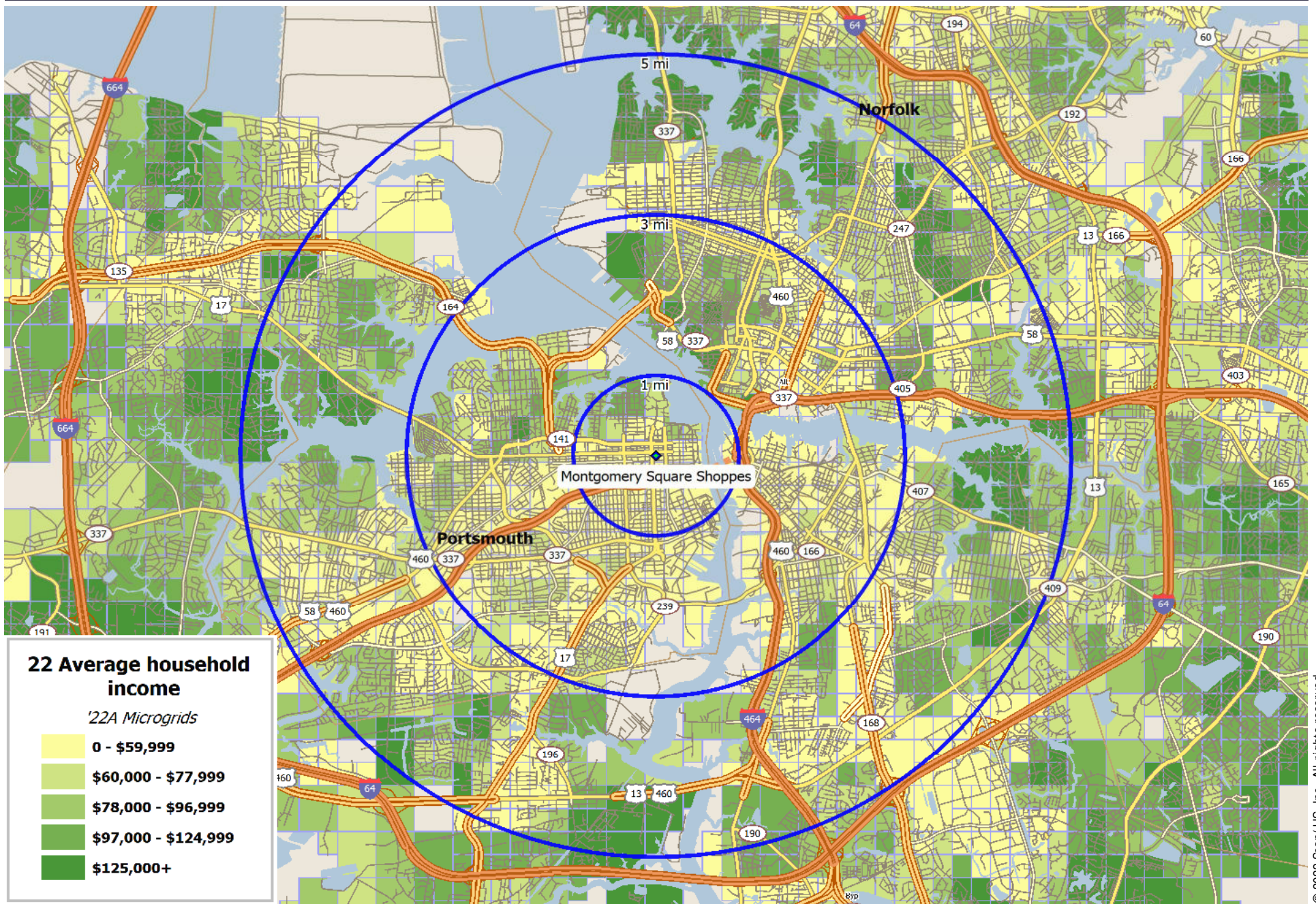


# Portsmouth, VA: 2022 Population



# Portsmouth, VA: 2022 Average Household Income



714 KING ST: PORTSMOUTH, VA 23704:  
SITE LOCATED AT 36.83457, 76.30592

Montgomery Square Shoppes

	<u>1 MI RING</u>		<u>3 MI RING</u>		<u>5 MI RING</u>	
<b>Population</b>						
2027 Projection	12,892		98,671		245,036	
% Change 2022-2027		-2.4%		-2.1%		-1.1%
2022 Estimate	13,214		100,745		247,774	
% Change 2010-2022		11.4%		-12.1%		-4.8%
2010 Census	11,862		114,571		260,350	
% Change 2000-2010		3.3%		26.1%		11.9%
2000 Census	11,486		90,842		232,608	
<b>Households</b>						
2027 Projection	5,554		39,166		95,032	
% Change 2022-2027		-5.1%		-4.9%		-3.3%
2022 Estimate	5,852		41,170		98,253	
% Change 2010-2022		19.0%		11.1%		7.3%
2010 Census	4,916		37,047		91,607	
% Change 2000-2010		8.7%		2.2%		2.2%
2000 Census	4,524		36,249		89,664	
<b>Age, total population</b>						
	<b>13,214</b>		<b>100,745</b>		<b>247,774</b>	
under 5 years	729	5.5%	6,412	6.4%	14,880	6.0%
5 to 9 years	784	5.9%	6,254	6.2%	14,734	5.9%
10 to 14 years	752	5.7%	5,722	5.7%	14,080	5.7%
15 to 19 years	752	5.7%	7,177	7.1%	17,802	7.2%
20 to 24 years	1,051	8.0%	9,077	9.0%	21,731	8.8%
25 to 34 years	2,067	15.6%	16,371	16.2%	37,575	15.2%
35 to 44 years	1,505	11.4%	11,665	11.6%	28,983	11.7%
45 to 54 years	1,578	11.9%	11,341	11.3%	28,544	11.5%
55 to 64 years	1,708	12.9%	11,566	11.5%	29,705	12.0%
65 to 74 years	1,355	10.3%	8,632	8.6%	23,412	9.4%
75 to 84 years	646	4.9%	4,586	4.6%	11,959	4.8%
85 years and over	285	2.2%	1,942	1.9%	4,369	1.8%
Median Age	36.72		35.71		37.79	
<b>Age, male population</b>						
	<b>6,458</b>		<b>48,251</b>		<b>119,480</b>	
under 20 years	1,542	23.9%	12,855	26.6%	31,089	26.0%
20 to 34 years	1,607	24.9%	12,538	26.0%	29,365	24.6%
35 to 44 years	789	12.2%	5,746	11.9%	14,239	11.9%
45 to 64 years	1,606	24.9%	10,935	22.7%	27,877	23.3%
65 to 84 years	824	12.8%	5,493	11.4%	15,325	12.8%
85 years and over	88	1.4%	685	1.4%	1,585	1.3%
Median Age	35.03		33.96		36.19	
<b>Age, female population</b>						
	<b>6,756</b>		<b>52,495</b>		<b>128,294</b>	
under 20 years	1,475	21.8%	12,710	24.2%	30,407	23.7%
20 to 34 years	1,511	22.4%	12,910	24.6%	29,941	23.3%
35 to 44 years	716	10.6%	5,919	11.3%	14,744	11.5%
45 to 64 years	1,680	24.9%	11,972	22.8%	30,372	23.7%
65 to 84 years	1,177	17.4%	7,725	14.7%	20,046	15.6%
85 years and over	197	2.9%	1,257	2.4%	2,784	2.2%
Median Age	39.06		37.34		39.24	

714 KING ST: PORTSMOUTH, VA 23704:  
SITE LOCATED AT 36.83457, 76.30592

Montgomery Square Shoppes

	<u>1 MI RING</u>		<u>3 MI RING</u>		<u>5 MI RING</u>	
<b>Total Aggregate Income (\$mil)</b>	\$340.1		\$2,593.7		\$7,116.3	
<b>Per Capita Income</b>	\$25,739		\$25,745		\$28,721	
<b><u>Household Income (households)</u></b>	<b>5,852</b>		<b>41,170</b>		<b>98,253</b>	
under \$10,000	893	15.3%	5,170	12.6%	9,071	9.2%
\$10,000 - \$14,999	267	4.6%	2,219	5.4%	4,340	4.4%
\$15,000 - \$19,999	211	3.6%	1,819	4.4%	3,774	3.8%
\$20,000 - \$24,999	292	5.0%	2,209	5.4%	4,857	4.9%
\$25,000 - \$29,999	284	4.9%	2,043	5.0%	4,501	4.6%
\$30,000 - \$34,999	326	5.6%	2,064	5.0%	4,667	4.7%
\$35,000 - \$39,999	326	5.6%	2,067	5.0%	4,642	4.7%
\$40,000 - \$49,999	549	9.4%	3,623	8.8%	8,391	8.5%
\$50,000 - \$59,999	556	9.5%	3,707	9.0%	8,935	9.1%
\$60,000 - \$74,999	536	9.2%	4,273	10.4%	10,770	11.0%
\$75,000 - \$99,999	712	12.2%	4,611	11.2%	12,899	13.1%
\$100,000 - \$124,999	367	6.3%	2,872	7.0%	7,856	8.0%
\$125,000 - \$149,999	163	2.8%	1,469	3.6%	4,981	5.1%
\$150,000 - \$199,999	153	2.6%	1,446	3.5%	4,333	4.4%
\$200,000 - \$249,999	92	1.6%	664	1.6%	1,785	1.8%
\$250,000 and over	126	2.2%	913	2.2%	2,450	2.5%
Aggregate Household Income (\$mil)	\$333.3		\$2,559.0		\$7,055.8	
Average Household Income	\$56,953		\$62,158		\$71,813	
Median Household Income	\$45,613		\$48,758		\$56,080	
<b><u>Family Income (families)</u></b>	<b>2,771</b>		<b>22,304</b>		<b>59,276</b>	
under \$10,000	328	11.8%	1,962	8.8%	3,537	6.0%
\$10,000 - \$14,999	75	2.7%	926	4.2%	1,846	3.1%
\$15,000 - \$19,999	98	3.5%	776	3.5%	1,444	2.4%
\$20,000 - \$24,999	105	3.8%	1,109	5.0%	2,265	3.8%
\$25,000 - \$29,999	82	3.0%	1,020	4.6%	2,151	3.6%
\$30,000 - \$34,999	131	4.7%	976	4.4%	2,332	3.9%
\$35,000 - \$39,999	167	6.0%	1,092	4.9%	2,504	4.2%
\$40,000 - \$49,999	249	9.0%	1,817	8.1%	4,451	7.5%
\$50,000 - \$59,999	251	9.1%	1,982	8.9%	5,032	8.5%
\$60,000 - \$74,999	241	8.7%	2,346	10.5%	6,979	11.8%
\$75,000 - \$99,999	426	15.4%	2,856	12.8%	9,210	15.5%
\$100,000 - \$124,999	245	8.8%	2,015	9.0%	6,014	10.1%
\$125,000 - \$149,999	127	4.6%	1,144	5.1%	4,212	7.1%
\$150,000 - \$199,999	127	4.6%	1,069	4.8%	3,683	6.2%
\$200,000 - \$249,999	55	2.0%	531	2.4%	1,569	2.6%
\$250,000 and over	62	2.2%	680	3.0%	2,045	3.4%
Aggregate family income (\$mil)	\$185.5		\$1,620.2		\$5,054.8	
Average family income	\$66,957		\$72,641		\$85,276	
Median family income	\$56,304		\$59,209		\$67,715	
<b><u>Non-Family Income (non-families)</u></b>	<b>3,081</b>		<b>18,866</b>		<b>38,977</b>	
Aggregate non-family income (\$mil)	\$147.8		\$938.8		\$2,001.0	
Average non-family income	\$47,957		\$49,763		\$51,338	
Median non-family income	\$34,396		\$37,148		\$36,659	

714 KING ST: PORTSMOUTH, VA 23704:  
SITE LOCATED AT 36.83457, 76.30592

Montgomery Square Shoppes

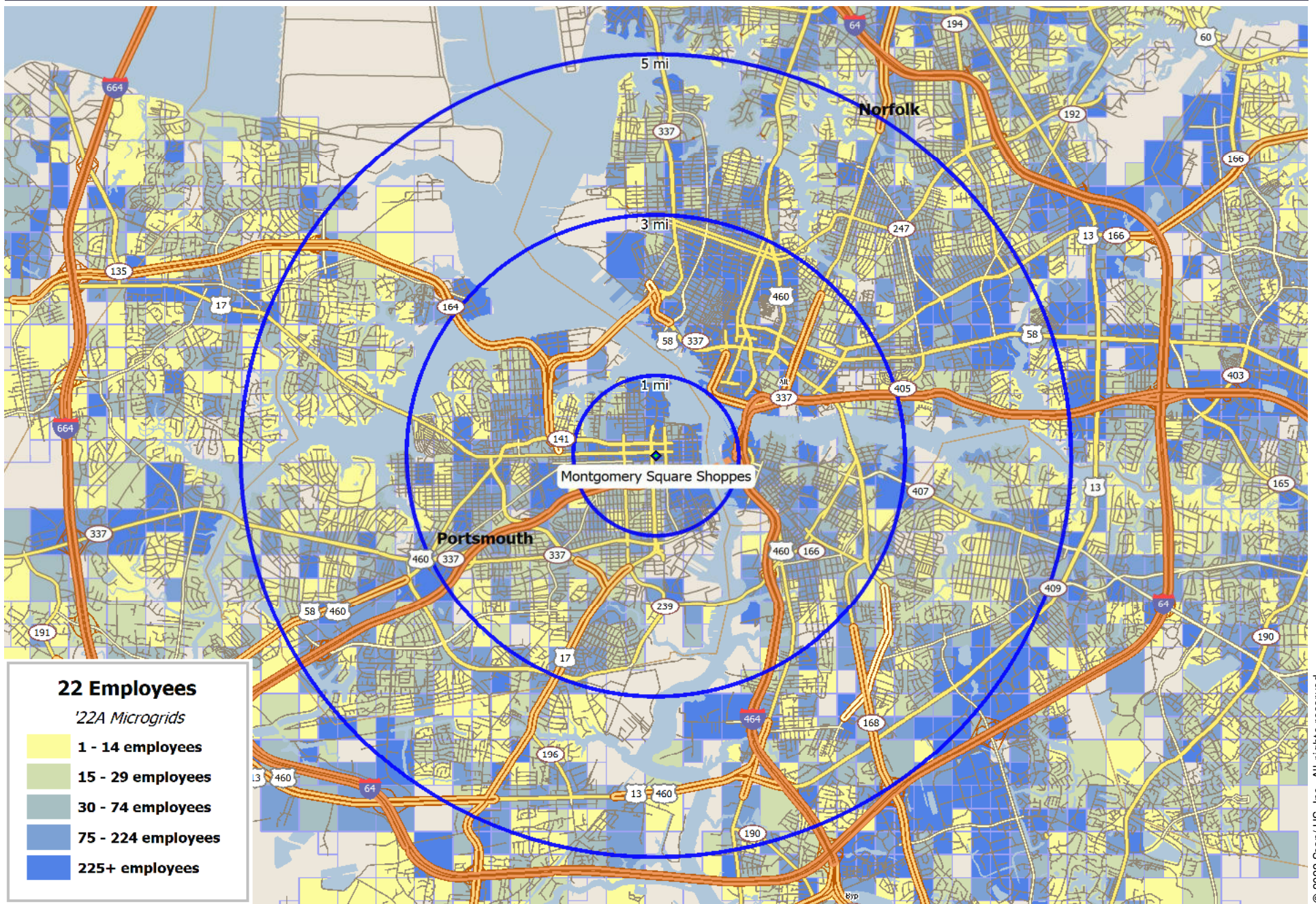
	<u>1 MI RING</u>		<u>3 MI RING</u>		<u>5 MI RING</u>	
<b>Population by Race/Ethnicity</b>	<b>13,214</b>		<b>100,745</b>		<b>247,774</b>	
White	4,027	30.5%	32,674	32.4%	92,511	37.3%
Black	7,830	59.3%	54,102	53.7%	117,645	47.5%
Asian	216	1.6%	4,399	4.4%	11,792	4.8%
Hawaiian/Pacific Islander	14	0.1%	108	0.1%	261	0.1%
American Indian/AK Native	60	0.5%	386	0.4%	1,011	0.4%
Other/multiple races	1,068	8.1%	9,077	9.0%	24,554	9.9%
<b>Hispanic Origin</b>	632	4.8%	5,695	5.7%	16,722	6.7%
<b>Education (persons 25+)</b>	<b>9,147</b>		<b>66,122</b>		<b>164,583</b>	
No high school diploma	1,081	11.8%	9,563	14.5%	20,771	12.6%
High school diploma	2,710	29.6%	17,876	27.0%	44,671	27.1%
College, no diploma	2,406	26.3%	16,349	24.7%	42,047	25.5%
Associate degree	711	7.8%	5,238	7.9%	14,305	8.7%
Bachelor's degree	1,034	11.3%	9,666	14.6%	25,056	15.2%
Graduate/professional degree	1,205	13.2%	7,430	11.2%	17,733	10.8%
<b>Labor Force (persons 16+ yrs)</b>						
<b>Total Population, Age 16+</b>	<b>10,777</b>		<b>81,164</b>		<b>201,234</b>	
Employed	5,036	46.7%	42,309	52.1%	108,041	53.7%
Unemployed	388	3.6%	2,909	3.6%	6,188	3.1%
In armed forces	1,110	10.3%	4,768	5.9%	9,800	4.9%
Not in labor force	4,243	39.4%	31,178	38.4%	77,205	38.4%
<b>Male Population, Age 16+</b>	<b>5,209</b>		<b>38,400</b>		<b>95,930</b>	
Employed	2,225	42.7%	19,339	50.4%	52,007	54.2%
Unemployed	194	3.7%	1,487	3.9%	3,038	3.2%
In armed forces	848	16.3%	3,614	9.4%	7,414	7.7%
Not in labor force	1,942	37.3%	13,960	36.4%	33,471	34.9%
<b>Female Population, Age 16+</b>	<b>5,568</b>		<b>42,764</b>		<b>105,304</b>	
Employed	2,811	50.5%	22,970	53.7%	56,034	53.2%
Unemployed	194	3.5%	1,422	3.3%	3,150	3.0%
In armed forces	262	4.7%	1,154	2.7%	2,386	2.3%
Not in labor force	2,301	41.3%	17,218	40.3%	43,734	41.5%
<b>Vehicles Available (households)</b>	<b>5,852</b>		<b>41,170</b>		<b>98,253</b>	
Households with no vehicles	1,017	17.4%	6,926	16.8%	11,890	12.1%
Households with 1 vehicle	2,773	47.4%	17,835	43.3%	36,087	36.7%
Households with 2 vehicles	1,546	26.4%	11,462	27.8%	32,394	33.0%
Households with 3+ vehicles	518	8.9%	4,944	12.0%	17,883	18.2%
Vehicles in owner households	3,353	44.5%	32,038	55.5%	107,023	65.5%
Vehicles in renter households	4,180	55.5%	25,648	44.5%	56,294	34.5%
<b>Total vehicles available</b>	7,533		57,686		163,317	
<b>Average vehicles per household</b>	1.29		1.40		1.66	

714 KING ST: PORTSMOUTH, VA 23704:  
SITE LOCATED AT 36.83457, 76.30592

Montgomery Square Shoppes

	<u>1 MI RING</u>		<u>3 MI RING</u>		<u>5 MI RING</u>	
<b><u>Households</u></b>	5,852		41,170		98,253	
Average household size	2.15		2.31		2.41	
<b><u>Families</u></b>	2,771		22,304		59,276	
Average family size	3.17		3.20		3.13	
<b><u>Non-Families</u></b>	3,081		18,866		38,977	
Average non-family size	1.23		1.27		1.31	
<b><u>Group Quarters</u></b>	656		5,501		11,304	
<b><u>Household Type</u></b>						
Families	2,771		22,304		59,276	
Married couples	1,268	45.8%	10,274	46.1%	32,292	54.5%
with children	406	32.0%	4,289	41.7%	13,586	42.1%
Male householder, no wife	244	8.8%	1,890	8.5%	5,030	8.5%
with children	119	48.8%	935	49.5%	2,517	50.0%
Female householder, no husband	1,259	45.4%	10,140	45.5%	21,552	36.4%
with children	791	62.8%	6,821	67.3%	13,931	64.6%
Non-Families	3,081		18,866		38,977	
with children	3	0.1%	19	0.1%	54	0.1%
<b><u>Age of Householder (households)</u></b>						
under 25 years	377	6.4%	2,952	7.2%	6,666	6.8%
25 to 34 years	1,113	19.0%	8,798	21.4%	19,119	19.5%
35 to 44 years	858	14.7%	6,422	15.6%	15,448	15.7%
45 to 54 years	895	15.3%	6,245	15.2%	15,340	15.6%
55 to 64 years	1,059	18.1%	6,828	16.6%	16,847	17.1%
65 to 74 years	927	15.8%	5,573	13.5%	14,240	14.5%
75 to 84 years	442	7.6%	3,086	7.5%	7,791	7.9%
85 years and over	181	3.1%	1,266	3.1%	2,801	2.9%
<b><u>Household Size (households)</u></b>						
1 person	2,679	45.8%	15,701	38.1%	31,501	32.1%
2 person	1,768	30.2%	12,525	30.4%	32,715	33.3%
3 to 4 persons	1,065	18.2%	9,703	23.6%	26,167	26.6%
5+ persons	342	5.8%	3,240	7.9%	7,870	8.0%
<b><u>Total Housing Units</u></b>	<b>6,857</b>		<b>45,740</b>		<b>106,351</b>	
Occupied	5,852	85.3%	41,169	90.0%	98,253	92.4%
Owner-occupied	2,009	34.3%	16,719	40.6%	51,473	52.4%
Renter-occupied	3,843	65.7%	24,450	59.4%	46,780	47.6%
Vacant	1,005	14.7%	4,571	10.0%	8,098	7.6%
<b><u>Housing Value</u></b>						
Average Home Value	\$267,334		\$302,685		\$342,173	
Median Home Value	\$199,653		\$213,209		\$219,040	
Average Contract Rent	\$1,101		\$1,088		\$1,070	
Median Contract Rent	\$835		\$832		\$839	

# Portsmouth, VA: 2022 Employees



© 2022 Scan/ US, Inc. All rights reserved.

714 KING ST: PORTSMOUTH, VA 23704:  
SITE LOCATED AT 36.83457, 76.30592

Montgomery Square Shoppes

	<u>1 MI RING</u>		<u>3 MI RING</u>		<u>5 MI RING</u>	
<b>Total Establishments</b>	<b>911</b>		<b>5,560</b>		<b>10,681</b>	
<b>Establishments by Type</b>						
<b>Industrial</b>	<b>89</b>	<b>9.8%</b>	<b>662</b>	<b>11.9%</b>	<b>1,659</b>	<b>15.5%</b>
Mining	1	1.1%	4	0.6%	10	0.6%
Construction	7	7.9%	63	9.5%	190	11.5%
Construction, <10 employees	26	29.2%	206	31.1%	583	35.1%
High-tech/research	3	3.4%	8	1.2%	18	1.1%
Trans/comm/utilities	34	38.2%	244	36.9%	479	28.9%
Wholesale/industrial	10	11.2%	75	11.3%	223	13.4%
Warehousing	6	6.7%	26	3.9%	79	4.8%
General industrial	2	2.2%	36	5.4%	77	4.6%
<b>Manufacturing</b>	<b>18</b>	<b>2.0%</b>	<b>159</b>	<b>2.9%</b>	<b>333</b>	<b>3.1%</b>
Heavy manufacturing	4	22.2%	20	12.6%	36	10.8%
General manufacturing	0	0.0%	5	3.1%	32	9.6%
Light manufacturing	3	16.7%	19	11.9%	31	9.3%
Manufacturing, <10 employees	11	61.1%	115	72.3%	234	70.3%
<b>Commercial</b>	<b>200</b>	<b>22.0%</b>	<b>1,488</b>	<b>26.8%</b>	<b>3,115</b>	<b>29.2%</b>
Retail trade	60	30.0%	480	32.3%	962	30.9%
Restaurants/bars	59	29.5%	357	24.0%	613	19.7%
Personal/rental/repair services	31	15.5%	258	17.3%	570	18.3%
Automotive repair services	6	3.0%	89	6.0%	262	8.4%
Hotels/motels	9	4.5%	24	1.6%	40	1.3%
Theaters/retail amusements	4	2.0%	14	0.9%	26	0.8%
Equipment rental	4	2.0%	26	1.7%	69	2.2%
Wholesale/commercial	7	3.5%	50	3.4%	95	3.0%
General commercial	20	10.0%	190	12.8%	478	15.3%
<b>Offices</b>	<b>479</b>	<b>52.6%</b>	<b>2,632</b>	<b>47.3%</b>	<b>4,345</b>	<b>40.7%</b>
Business and corporate administration	6	1.3%	51	1.9%	89	2.0%
Finance/ins/real estate	13	2.7%	66	2.5%	112	2.6%
Finance/ins/real estate, <10 employees	89	18.6%	527	20.0%	896	20.6%
Professional services	133	27.8%	592	22.5%	916	21.1%
Business services	28	5.8%	215	8.2%	446	10.3%
General office	97	20.3%	569	21.6%	936	21.5%
Medical services	113	23.6%	612	23.3%	950	21.9%
<b>Other</b>	<b>123</b>	<b>13.5%</b>	<b>593</b>	<b>10.7%</b>	<b>1,168</b>	<b>10.9%</b>
Schools and colleges	11	8.9%	86	14.5%	180	15.4%
Libraries	2	1.6%	13	2.2%	24	2.1%
Hospitals/medical services	12	9.8%	52	8.8%	87	7.4%
Museums/art galleries/gardens	7	5.7%	20	3.4%	31	2.7%
Outdoor recreation/amusement parks	8	6.5%	34	5.7%	74	6.3%
Public administration	22	17.9%	88	14.8%	129	11.0%
Churches	41	33.3%	220	37.1%	501	42.9%
Other, not elsewhere classified	20	16.3%	80	13.5%	142	12.2%
<b>Agriculture</b>	<b>3</b>	<b>0.3%</b>	<b>27</b>	<b>0.5%</b>	<b>58</b>	<b>0.5%</b>
Agricultural production	0	0.0%	2	7.4%	2	3.4%
Agricultural services	3	100.0%	25	92.6%	56	96.6%

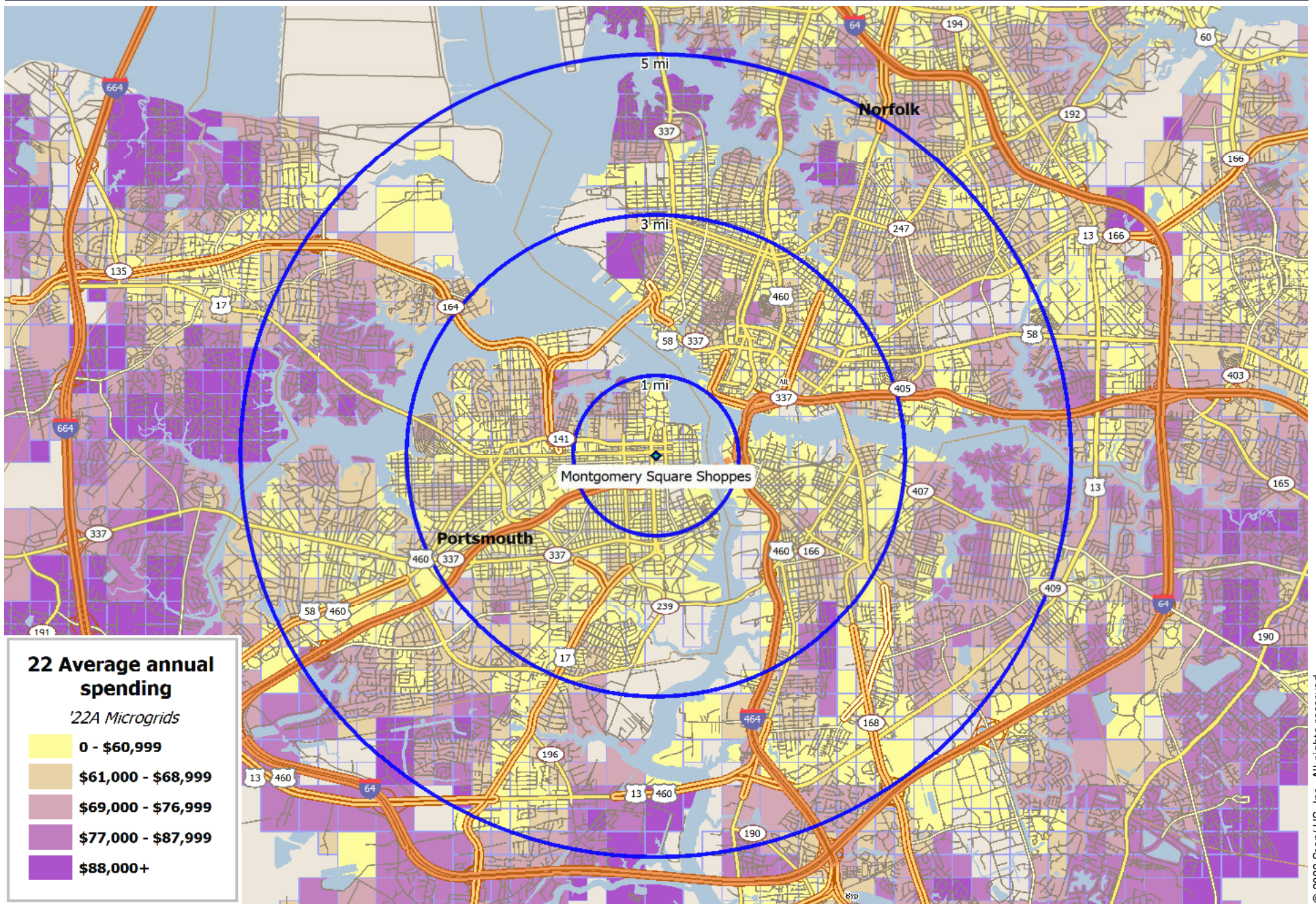


714 KING ST: PORTSMOUTH, VA 23704:  
SITE LOCATED AT 36.83457, 76.30592

Montgomery Square Shoppes

	<u>1 MI RING</u>		<u>3 MI RING</u>		<u>5 MI RING</u>	
<b>Total Employees</b>	<b>11,431</b>		<b>78,915</b>		<b>130,822</b>	
<b>Employees by Type</b>						
<b>Industrial</b>	<b>1,190</b>	<b>10.4%</b>	<b>9,335</b>	<b>11.8%</b>	<b>21,381</b>	<b>16.3%</b>
Mining	1	0.1%	203	2.2%	436	2.0%
Construction	257	21.6%	1,930	20.7%	6,862	32.1%
Construction, <10 employees	61	5.1%	575	6.2%	1,660	7.8%
High-tech/research	13	1.1%	34	0.4%	70	0.3%
Trans/comm/utilities	337	28.3%	4,093	43.8%	6,946	32.5%
Wholesale/industrial	306	25.7%	1,148	12.3%	2,866	13.4%
Warehousing	14	1.2%	284	3.0%	877	4.1%
General industrial	201	16.9%	1,068	11.4%	1,664	7.8%
<b>Manufacturing</b>	<b>1,100</b>	<b>9.6%</b>	<b>8,950</b>	<b>11.3%</b>	<b>12,532</b>	<b>9.6%</b>
Heavy manufacturing	833	75.7%	3,658	40.9%	4,452	35.5%
General manufacturing	0	0.0%	172	1.9%	2,194	17.5%
Light manufacturing	235	21.4%	4,724	52.8%	5,092	40.6%
Manufacturing, <10 employees	32	2.9%	396	4.4%	794	6.3%
<b>Commercial</b>	<b>2,422</b>	<b>21.2%</b>	<b>12,713</b>	<b>16.1%</b>	<b>24,033</b>	<b>18.4%</b>
Retail trade	339	14.0%	3,155	24.8%	7,205	30.0%
Restaurants/bars	557	23.0%	3,668	28.9%	6,180	25.7%
Personal/rental/repair services	216	8.9%	1,645	12.9%	2,819	11.7%
Automotive repair services	13	0.5%	312	2.5%	996	4.1%
Hotels/motels	266	11.0%	671	5.3%	875	3.6%
Theaters/retail amusements	30	1.2%	125	1.0%	184	0.8%
Equipment rental	8	0.3%	178	1.4%	511	2.1%
Wholesale/commercial	42	1.7%	200	1.6%	574	2.4%
General commercial	951	39.3%	2,759	21.7%	4,689	19.5%
<b>Offices</b>	<b>4,542</b>	<b>39.7%</b>	<b>21,099</b>	<b>26.7%</b>	<b>33,157</b>	<b>25.3%</b>
Business and corporate administration	28	0.6%	356	1.7%	603	1.8%
Finance/ins/real estate	561	12.4%	1,920	9.1%	2,650	8.0%
Finance/ins/real estate, <10 employees	241	5.3%	1,431	6.8%	2,450	7.4%
Professional services	2,026	44.6%	6,548	31.0%	12,113	36.5%
Business services	179	3.9%	1,298	6.2%	2,149	6.5%
General office	980	21.6%	5,881	27.9%	8,162	24.6%
Medical services	527	11.6%	3,665	17.4%	5,030	15.2%
<b>Other</b>	<b>2,172</b>	<b>19.0%</b>	<b>26,733</b>	<b>33.9%</b>	<b>39,491</b>	<b>30.2%</b>
Schools and colleges	665	30.6%	6,879	25.7%	12,331	31.2%
Libraries	16	0.7%	85	0.3%	231	0.6%
Hospitals/medical services	314	14.5%	11,826	44.2%	14,768	37.4%
Museums/art galleries/gardens	66	3.0%	210	0.8%	247	0.6%
Outdoor recreation/amusement parks	72	3.3%	224	0.8%	638	1.6%
Public administration	756	34.8%	6,232	23.3%	8,796	22.3%
Churches	151	7.0%	822	3.1%	1,702	4.3%
Other, not elsewhere classified	132	6.1%	455	1.7%	778	2.0%
<b>Agriculture</b>	<b>4</b>	<b>0.0%</b>	<b>89</b>	<b>0.1%</b>	<b>226</b>	<b>0.2%</b>
Agricultural production	0	0.0%	3	3.4%	3	1.3%
Agricultural services	4	100.0%	86	96.6%	223	98.7%

# Portsmouth, VA: 2022 Average Annual Spending



© 2022 Scan/ US, Inc. All rights reserved.

714 KING ST: PORTSMOUTH, VA 23704:  
SITE LOCATED AT 36.83457, 76.30592

Montgomery Square Shoppes

	<u>1 MI RING</u>	<u>3 MI RING</u>	<u>5 MI RING</u>
<b>Households</b>	<b>5,852</b>	<b>41,170</b>	<b>98,253</b>
Owner households	2,009	16,719	51,473
Renter households	3,843	24,450	46,780
Average Household income	\$56,953	\$62,158	\$71,813
Average Annual Household Spending	\$53,019	\$53,355	\$59,025

Average Annual Spending by Category

<b>Food</b>	<b>\$6,918</b>	<b>13.0%</b>	<b>\$7,078</b>	<b>13.3%</b>	<b>\$7,712</b>	<b>13.1%</b>
Food at home	\$4,084	59.0%	\$4,153	58.7%	\$4,470	58.0%
Cereals/bakery products	\$512	12.5%	\$520	12.5%	\$559	12.5%
Meats/poultry/fish/eggs	\$881	21.6%	\$896	21.6%	\$961	21.5%
Dairy products	\$383	9.4%	\$389	9.4%	\$419	9.4%
Fruits/vegetables	\$750	18.4%	\$762	18.4%	\$824	18.4%
Other food at home	\$1,549	37.9%	\$1,576	38.0%	\$1,699	38.0%
Food away from home	\$2,833	40.9%	\$2,925	41.3%	\$3,241	42.0%
<b>Alcoholic beverages</b>	<b>\$427</b>	<b>0.8%</b>	<b>\$436</b>	<b>0.8%</b>	<b>\$499</b>	<b>0.8%</b>
<b>Tobacco products</b>	<b>\$393</b>	<b>0.7%</b>	<b>\$398</b>	<b>0.7%</b>	<b>\$401</b>	<b>0.7%</b>
<b>Housing</b>	<b>\$19,492</b>	<b>36.8%</b>	<b>\$18,976</b>	<b>35.6%</b>	<b>\$20,230</b>	<b>34.3%</b>
Shelter	\$10,916	56.0%	\$10,630	56.0%	\$11,283	55.8%
Owned dwellings	\$2,794	25.6%	\$3,362	31.6%	\$4,725	41.9%
Mortgage interest/charges	\$1,204	43.1%	\$1,484	44.1%	\$2,064	43.7%
Property taxes	\$698	25.0%	\$828	24.6%	\$1,174	24.9%
Maintenance/repairs/insurance	\$892	31.9%	\$1,050	31.2%	\$1,487	31.5%
Rented dwellings	\$7,273	66.6%	\$6,348	59.7%	\$5,367	47.6%
Other lodging	\$847	7.8%	\$918	8.6%	\$1,189	10.5%
Household furnishings & equipment	\$1,979	10.2%	\$1,928	10.2%	\$2,111	10.4%
Household textiles	\$125	6.3%	\$120	6.2%	\$131	6.2%
Furniture	\$501	25.3%	\$492	25.5%	\$541	25.7%
Floor coverings	\$24	1.2%	\$22	1.1%	\$25	1.2%
Major appliances	\$312	15.7%	\$304	15.8%	\$336	15.9%
Small appliances/housewares	\$106	5.4%	\$104	5.4%	\$113	5.4%
Miscellaneous household equipment	\$913	46.1%	\$886	46.0%	\$964	45.7%
Utilities/fuels/public services	\$4,376	22.5%	\$4,258	22.4%	\$4,504	22.3%
Household operations	\$1,426	7.3%	\$1,394	7.3%	\$1,510	7.5%
Housekeeping supplies	\$786	4.0%	\$757	4.0%	\$814	4.0%
<b>Apparel</b>	<b>\$1,484</b>	<b>2.8%</b>	<b>\$1,539</b>	<b>2.9%</b>	<b>\$1,692</b>	<b>2.9%</b>
Men & boys	\$367	24.7%	\$387	25.1%	\$427	25.3%
Men, 16 yrs and over	\$294	80.0%	\$309	79.8%	\$345	80.7%
Boys, 2 to 15 yrs	\$74	20.0%	\$78	20.2%	\$82	19.3%
Women & girls	\$531	35.8%	\$544	35.4%	\$606	35.8%
Women, 16 yrs and over	\$455	85.6%	\$465	85.4%	\$523	86.3%
Girls, 2 to 15 yrs	\$77	14.4%	\$79	14.6%	\$83	13.7%

714 KING ST: PORTSMOUTH, VA 23704:  
SITE LOCATED AT 36.83457, 76.30592

Montgomery Square Shoppes

	<u>1 MI RING</u>		<u>3 MI RING</u>		<u>5 MI RING</u>	
<b>Average Annual Spending by Category</b>						
<b>Apparel (cont'd)</b>						
Children under 2 yrs	\$60	4.0%	\$64	4.2%	\$68	4.0%
Footwear	\$343	23.1%	\$355	23.0%	\$380	22.5%
Other apparel	\$180	12.1%	\$186	12.1%	\$208	12.3%
<b>Transportation</b>	<b>\$8,054</b>	<b>15.2%</b>	<b>\$8,596</b>	<b>16.1%</b>	<b>\$9,942</b>	<b>16.8%</b>
Vehicle purchases	\$3,225	40.0%	\$3,427	39.9%	\$4,103	41.3%
Cars and trucks, new	\$1,416	43.9%	\$1,508	44.0%	\$1,863	45.4%
Cars and trucks, used	\$1,753	54.3%	\$1,857	54.2%	\$2,160	52.7%
Other vehicles	\$57	1.8%	\$62	1.8%	\$79	1.9%
Gasoline & motor oil	\$1,525	18.9%	\$1,592	18.5%	\$1,876	18.9%
Other vehicle expenses	\$2,330	28.9%	\$2,436	28.3%	\$2,918	29.4%
Finance charges	\$187	8.0%	\$201	8.2%	\$244	8.4%
Maintenance and repairs	\$595	25.5%	\$617	25.3%	\$740	25.4%
Insurance	\$341	14.6%	\$359	14.8%	\$442	15.1%
Rental/leasing/other	\$1,207	51.8%	\$1,259	51.7%	\$1,492	51.1%
Public & other transportation	\$969	12.0%	\$1,137	13.2%	\$1,041	10.5%
<b>Health care</b>	<b>\$4,816</b>	<b>9.1%</b>	<b>\$4,805</b>	<b>9.0%</b>	<b>\$5,350</b>	<b>9.1%</b>
Health Insurance	\$3,388	70.3%	\$3,371	70.2%	\$3,745	70.0%
Medical services	\$775	16.1%	\$784	16.3%	\$886	16.6%
Drugs	\$495	10.3%	\$489	10.2%	\$539	10.1%
Medical supplies	\$159	3.3%	\$161	3.3%	\$180	3.4%
<b>Entertainment</b>	<b>\$2,766</b>	<b>5.2%</b>	<b>\$2,667</b>	<b>5.0%</b>	<b>\$2,926</b>	<b>5.0%</b>
Fees and admissions	\$768	27.8%	\$733	27.5%	\$833	28.5%
Audio/visual equipment/services	\$1,028	37.2%	\$994	37.3%	\$1,066	36.4%
Pets/toys/playground equipment	\$743	26.9%	\$724	27.1%	\$782	26.7%
Other entertainment supplies	\$227	8.2%	\$217	8.1%	\$245	8.4%
<b>Personal care products and services</b>	<b>\$678</b>	<b>1.3%</b>	<b>\$690</b>	<b>1.3%</b>	<b>\$763</b>	<b>1.3%</b>
<b>Reading</b>	<b>\$78</b>	<b>0.1%</b>	<b>\$79</b>	<b>0.1%</b>	<b>\$87</b>	<b>0.1%</b>
<b>Education</b>	<b>\$895</b>	<b>1.7%</b>	<b>\$920</b>	<b>1.7%</b>	<b>\$1,020</b>	<b>1.7%</b>
<b>Personal insurance &amp; pensions</b>	<b>\$4,448</b>	<b>8.4%</b>	<b>\$4,693</b>	<b>8.8%</b>	<b>\$5,630</b>	<b>9.5%</b>
Pensions/social security	\$4,033	90.7%	\$4,275	91.1%	\$5,137	91.2%
Life/other personal insurance	\$416	9.3%	\$418	8.9%	\$493	8.8%
<b>Cash contributions</b>	<b>\$1,761</b>	<b>3.3%</b>	<b>\$1,699</b>	<b>3.2%</b>	<b>\$1,942</b>	<b>3.3%</b>
<b>Miscellaneous</b>	<b>\$797</b>	<b>1.5%</b>	<b>\$770</b>	<b>1.4%</b>	<b>\$823</b>	<b>1.4%</b>