

Montgomery Square Shoppes

725 High Street
Portsmouth, VA 23704



WELCOME TO
Montgomery Square Apartments
Studios, 1, 2 & 3 Bedroom with Lofts
757-778-0801
MontgomerySquareApartments.com
Visit Our
Leasing Office
714 King Street
in back of the building



Broker Contact:
Mark Pendleton
(757) 486.1000 TTY 711





Why Choose Montgomery Square Shoppes?

118,000

Over 118,000 potential customers reside within a three (3) mile radius.

Downtown Major Employers include the Naval Shipyard and the Naval Medical Center.

908 apartments within the Downtown Portsmouth area and 69 units directly above the Shoppes.

65,000

Strong traffic counts of over 65,000 cars per day at the intersection of High Street and Effingham Street.

Major Downtown attractions include the Atlantic Union Pavillion, Virginia Sports Hall of Fame, Children's Museum of Virginia and the 1940's Commodore Theater.



Montgomery Square Shoppes
1725 High Street
Portsmouth, VA 23704

Size:
43,816 SF

Parking:
Street Parking & Public Parking Lot

Rental Rate:
Price Negotiable

Space Available:
Unit 103B 2,317 SF
Unit 104B 10,922 SF

Broker Contact
Mark Pendleton
(757) 486.1000

Montgomery Square Tenants

Suite #	Tenant
101	Bloom Coworking
102	Cure Coffeehouse
103A	Post Secondary Brewing
103B	Available 2,317 SF
104	Bloom Coworking
104B	Available 10,922 SF



Post Secondary Brewing

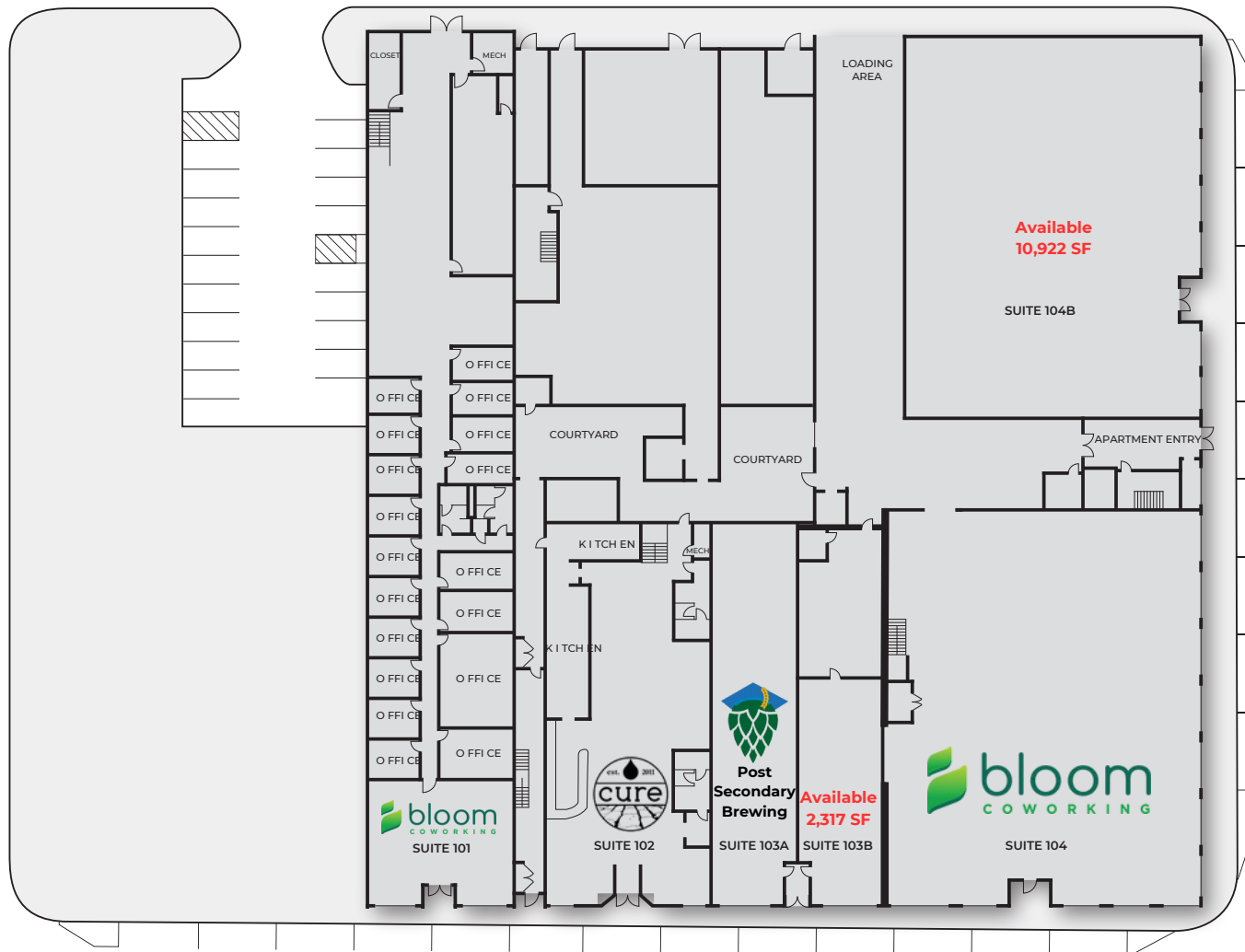
Montgomery Square Shopping Center

725 High St. • Portsmouth, VA 23704 • www.TheBreedenCompany.com

King St.

Green St.

Effingham St.



High St.





OUR MISSION

Guided by our beliefs and values, The Breeden Company seeks to create and promote inspiring communities. We strive to grow our business with the same honesty and integrity we use to develop and manage our projects. Every day, we hold true to these values:

BELIEF

We believe our success will always lie in our integrity.

RELATIONSHIPS

We believe every relationship is our most important one.

ENTREPRENEURIAL

We believe in inspiring creativity and innovation.

EXPERTISE

We believe in hiring and training the best.

DILIGENCE

We believe the smallest detail is of the greatest importance.

ENTHUSIASM

We believe in serving passionately and positively.

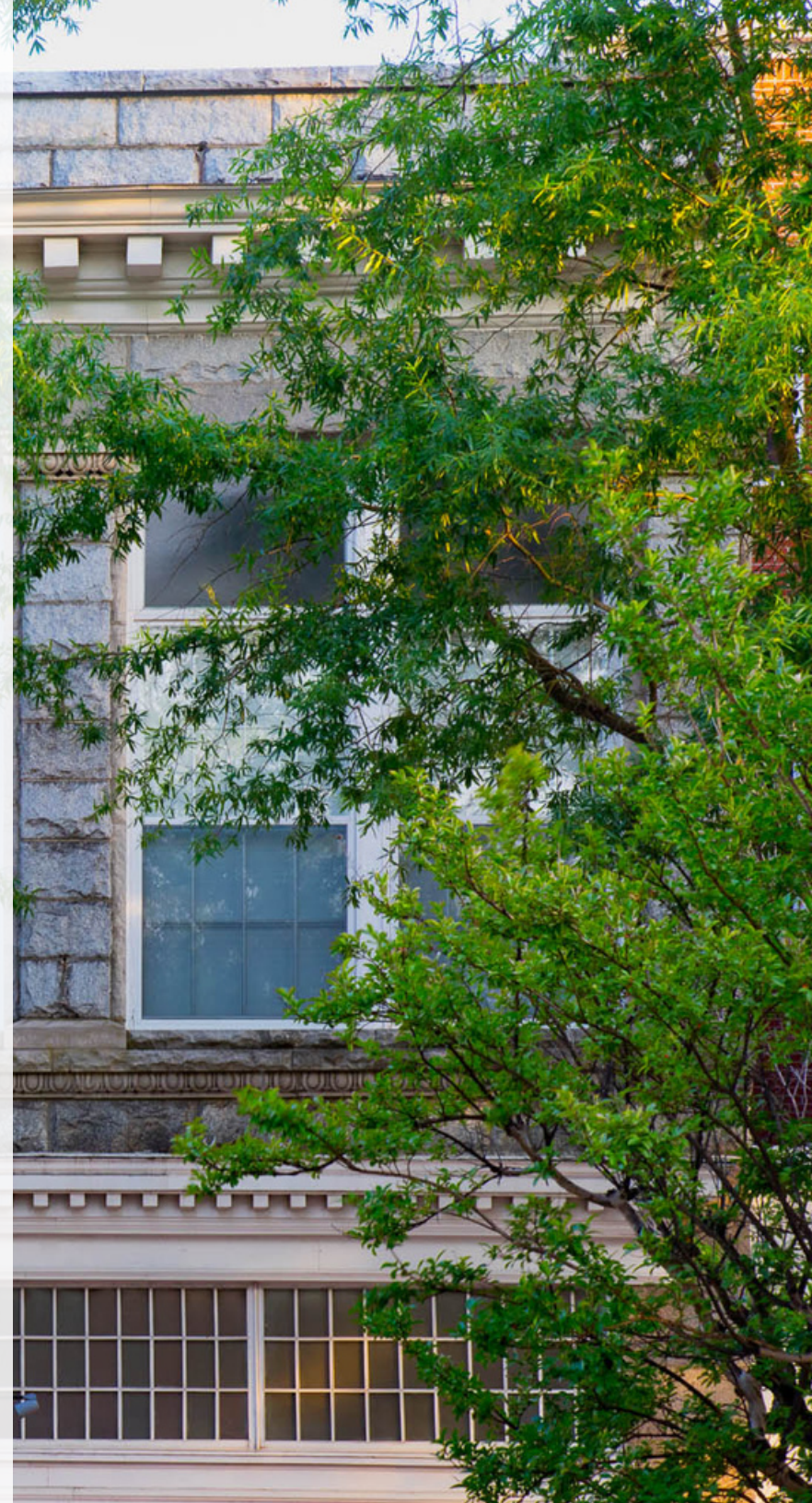
NO EXCUSES

We believe in finding solutions, not problems.

WHY CHOOSE A BREEDEN COMMERCIAL SPACE?

Nationally recognized, with more than 60 years of expertise in every facet of the industry, The Breeden Company is a real estate development company that boasts a portfolio of over 2 million square feet of retail and office that have been designed, developed and managed. We are a collective driven by client relationships. We believe in providing innovative CRE solutions that meet and exceed our clients' needs.

Breeden Realty is the 9th largest CRE firm in Virginia (Virginia Business, October 2022).



Montgomery Square Shoppes



WELCOME TO
Montgomery Square Apartments
Studios, 1, 2 & 3 Bedroom
757-778-0801
apartments.com
with Lofts
Visit Our
Leasing Office
714 King Street
(at back of this building)

The Breedon Company
560 Lynnhaven Parkway
Virginia Beach, VA 23456
(757) 486.1000 TTY 711

www.TheBreedonCompany.com

Montgomery Square Shoppes
are proudly designed,
developed & managed by

